



# The Reagan

Elevation 1



## Base Home

1<sup>st</sup> Floor – 1,243 sf

2<sup>nd</sup> Floor – 937 sf

Total Base Size – 2,180 sf

This 4 bedroom, 2 ½ bath home offers an open concept floor plan complete with a first floor owner's suite! It also has an option for an additional owner's suite on the 2<sup>nd</sup> floor.

---

The Elevation 1 rendering shown above shows a fireplace bump out on the side that is optional.



**Brochure Floor Plans and Brochure Elevation Disclaimers.**

- Seller reserves the right to make changes without notice or obligation.
- Illustrations are an artist's conception and may vary in detail from specifications.
- Room sizes and square footages are approximate and based on the architect's design documents. Actual dimensions will vary.
- Illustrations and floor plans are shown with features that may be optional in different neighborhoods. This applies to all items, including but not limited to floor coverings, windows, fireplaces, baths and rooms. Consult the standard feature sheet and the sales consultant for the standard features in your neighborhood.
- The homes do not come with any furniture or area rugs. The furniture shown is for illustration and scale purposes only.
- The brochure floor plan and elevation will be attached to the contract of sale for each home and marked to show which features on the floor plan are included in each specific home.
- The locations of the HVAC systems, hot water tank, sump pump and other equipment are subject to change at the Seller's sole discretion.
- Front doors and garage doors shown on the renderings may or may not be the standard for your specific neighborhood. Check with the sales manager or the standard feature sheet to confirm the standard style of front door or standard style of garage door.
- Window grid patterns vary from project to project. Check with the sales manager or the standard feature sheet to confirm the window grid pattern for your neighborhood.
- The kitchen floor plans show a cabinet and appliance layout that may not be accurate and may show features or appliances that are optional. The Sales Manager will have cabinet drawings that show the cabinet layout and appliance locations along with standard and optional appliances for your specific community.
- The number of steps from the home into the garage vary from home to home. The grading of the lot will dictate the elevation of the garage floor, which will determine the number of steps into the home. The number of steps shown on these floor plans is an example and not a representation of the number of steps in any particular home. If additional steps are required, they may infringe on the adjacent garage parking space and affect the ability to park a large vehicle in that location.
- The washer, dryer and laundry tub shown in the laundry room are optional.
- All items shown with dashed lines are optional.
- Fireplaces are not available in Wrightmoore.
- The location of items such as the hot water heater, sewer ejector pump, HVAC Equipment and other items may be shown graphically on the plans. Their exact location shall be determined at Seller's sole discretion based on specific conditions of each home to be built. The plans do not necessarily reflect the final location of these items.



Highmeadow homes built and sold by Sturbridge Embark Homes II LLC; MHBR #8043





Elevation 2



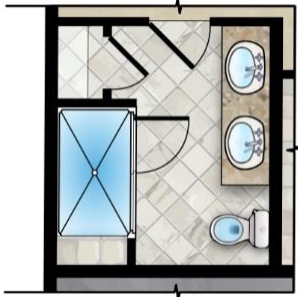
---

The Elevation 2 rendering shown above shows a fireplace bump out on the side that is optional.

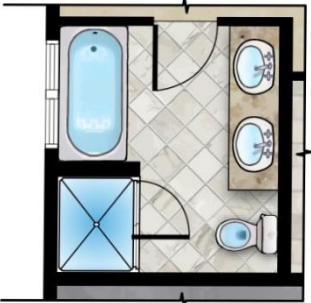


## The Reagan

First Floor



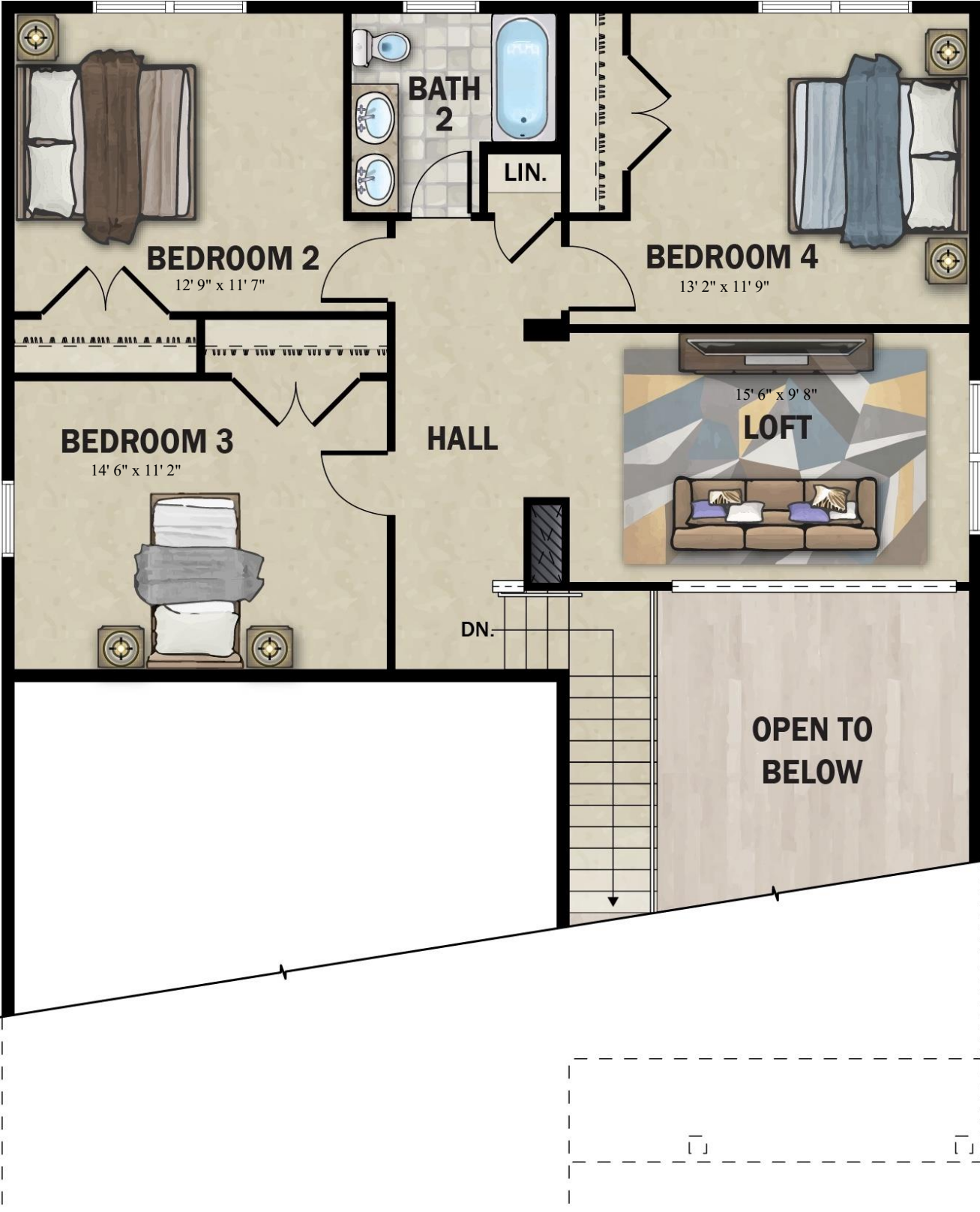
Optional Bath with Large Shower and Seat.



Optional Super Bath with Separate Shower and Tub.

# The Reagan

Standard Second Floor



# STURBRIDGE

H O M E S

## The Reagan

Optional Second Floor with Second Owner's Suite

