



# The Glastonbury

## Elevation 1



### Base Home

1st Floor - 1,024 sf

2nd Floor—1,335 sf

Total Base Size - 2,359 sf

Our newest model, this 4 bedroom, 2.5 bath home has an open concept floor plan. With the basement finished the home expands to 5 bedrooms and 3.5 baths. The second level is expansive with large bedrooms and a laundry room that has room for an optional laundry tub.

---



**Brochure Floor Plans and Brochure Elevation Disclaimers.**

- Seller reserves the right to make changes without notice or obligation.
- Illustrations are an artist's conception and may vary in detail from specifications.
- Room sizes and square footages are approximate and based on the architect's design documents. Actual dimensions will vary.
- Illustrations and floor plans are shown with features that may be optional in different neighborhoods. This applies to all items, including but not limited to floor coverings, windows, fireplaces, baths and rooms. Consult the standard feature sheet and the sales consultant for the standard features in your neighborhood.
- The homes do not come with any furniture or area rugs, furniture shown is for illustration and scale purposes only.
- The brochure floor plan and elevation will be attached to the contract of sale for each home and marked to show which features on the floor plan are included in each specific home.
- Each basement will come with two (2) standard windows. One of these windows will be an egress window. If an area way exit is purchased, two other windows are still included, but in this case neither of them will be an egress window unless an optional egress window is selected and added to the contract.
- Front doors and garage doors shown on the renderings may or may not be the standard front doors for your specific neighborhood. Check with the sales manager or the standard feature sheet to confirm the standard style of front door or standard style of garage door.
- Window grid patterns vary from project to project. Check with the sales manager or the standard feature sheet to confirm the window grid pattern for your neighborhood.
- The kitchen floor plans show a cabinet and appliance layout that may not be accurate and may show features or appliances that are optional. The Sales Manager will have cabinet drawings that show the cabinet layout and appliance locations along with standard and optional appliances for your specific community.
- The number of steps from the home into the garage vary from home to home. The grading of the lot will dictate the elevation of the garage floor, which will determine the number of steps in to the home. The number of steps shown on these floor plans is an example and not a representation of the number of steps in any particular home. If additional steps are required, they may infringe on the adjacent garage parking space and affect the ability to park a large vehicle in that location.
- The basement comes standard with a 3-piece basement bath rough-in. This rough-in will be installed at the bathroom location shown on the optional finished basement plan. The basement is unfinished in the base home, all of the rooms shown on the basement plan are optional.
- The washer, dryer and laundry tub are optional.
- The bench shown in the mud room is optional.
- All items shown with dashed lines are optional.
- All fireplaces are optional.
- The location of items such as the hot water heater, sump pump, sewer ejector pump, HVAC Equipment and other items may be shown graphically on the plans. Their exact location shall be determined at Seller's sole discretion based on specific conditions of each home to be built. The plans do not necessarily reflect the final location of these items.



Highland Woods homes built and sold by Sturbridge Highland LLC; MHBR #8500  
North Shore Landing homes built and sold by Sturbridge North Shore Landing LLC; MHBR #8378  
Pony Club homes built and sold by WSTR Building Company LLC; MHBR #7290



# STURBRIDGE

H O M E S

Elevation 2

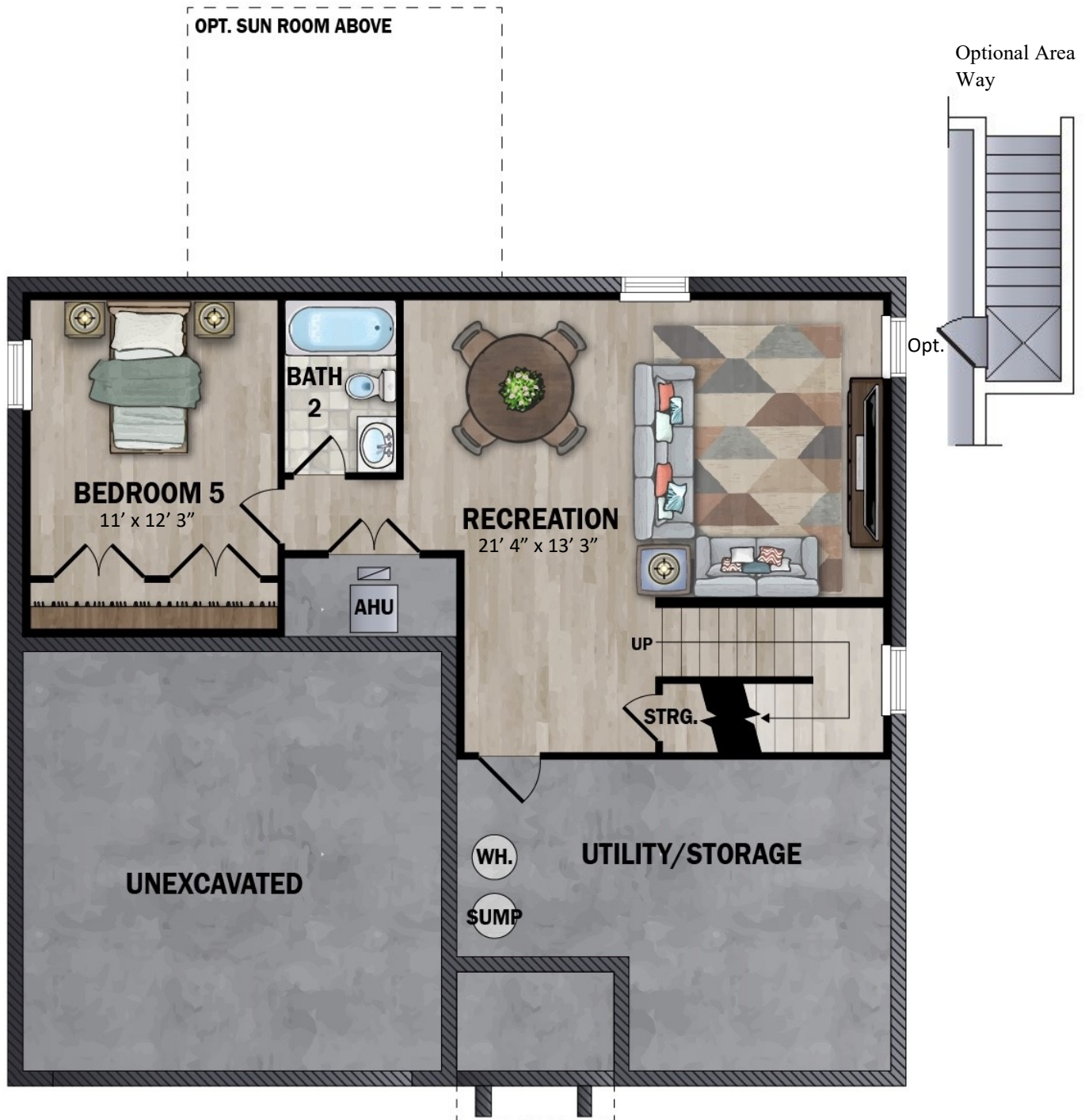


Elevation 3





## The Glastonbury



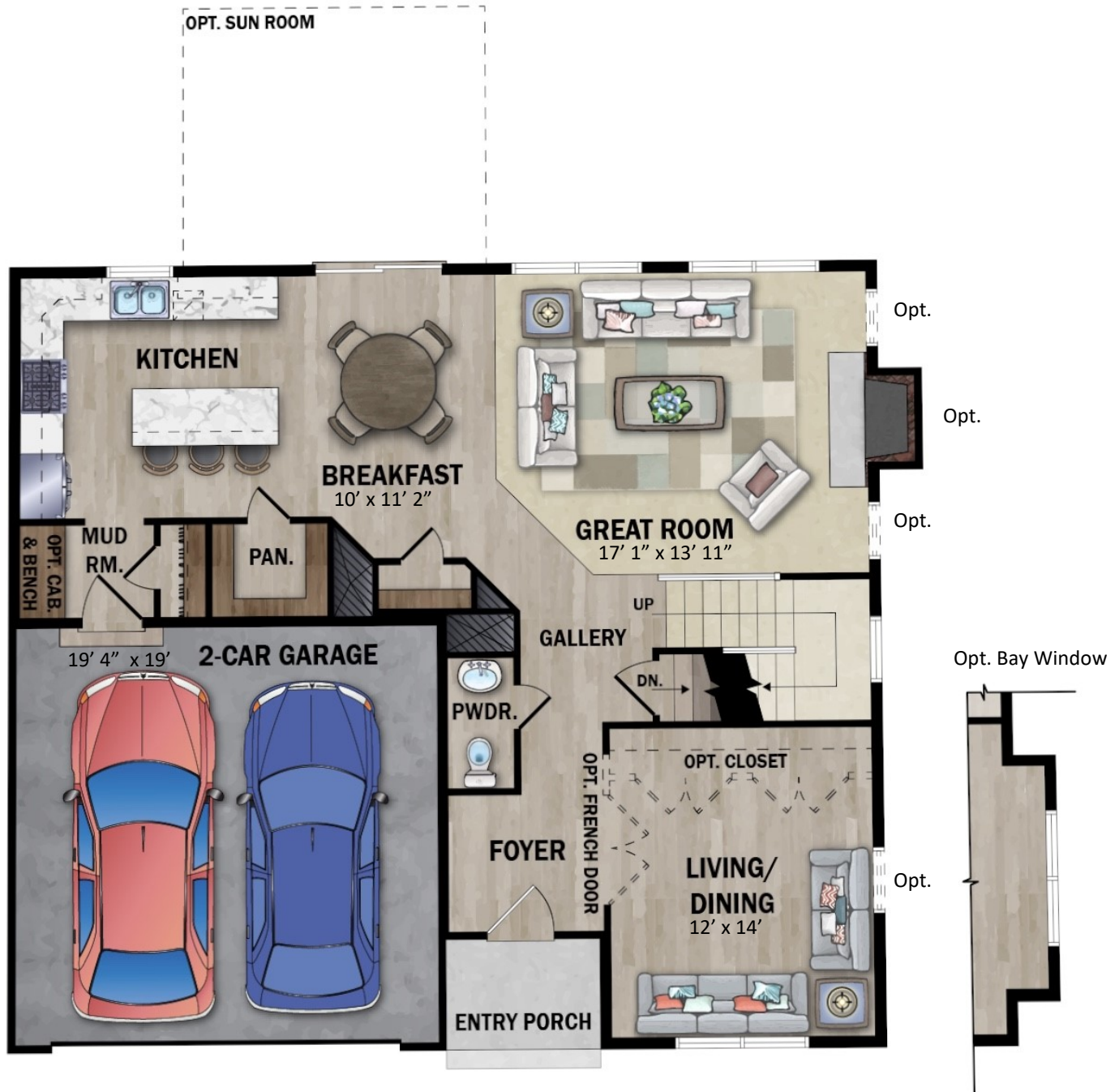
All finished areas in the basement are optional.



# STURBRIDGE

## HOMES

### The Glastonbury First Floor Plan

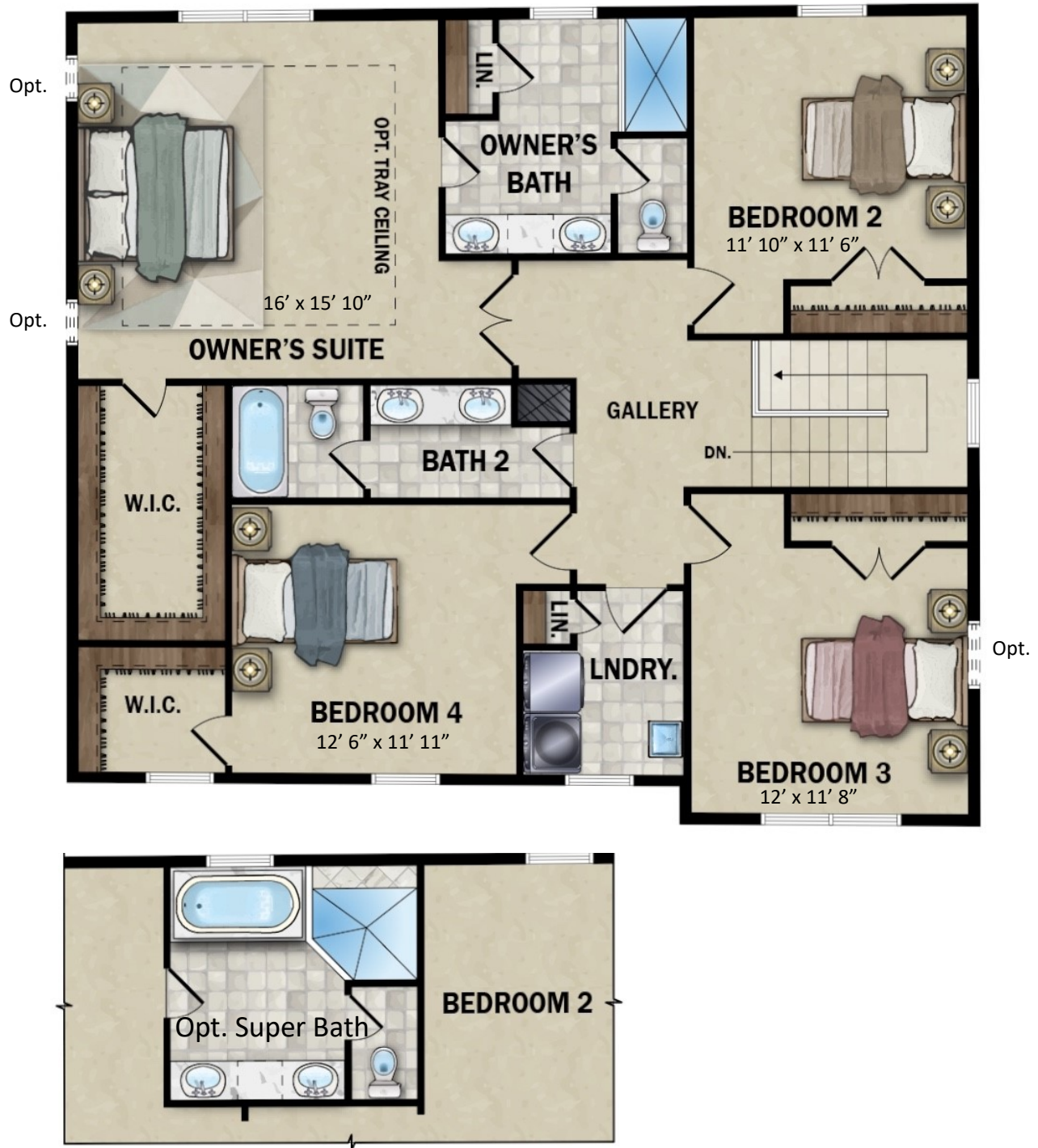


The fireplace is optional. Mud room bench and cabinets are optional. All dashed items are optional.



## The Glastonbury

### Second Floor Plan (Elevation 1)



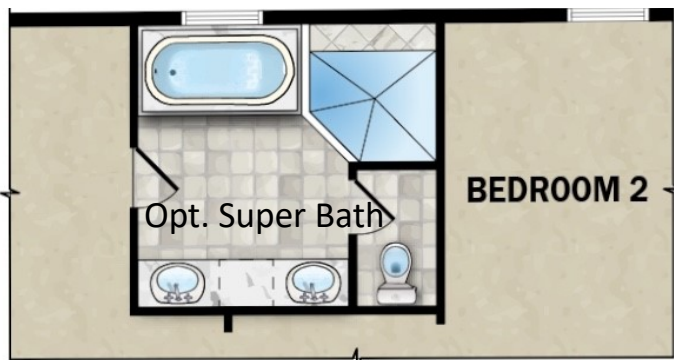
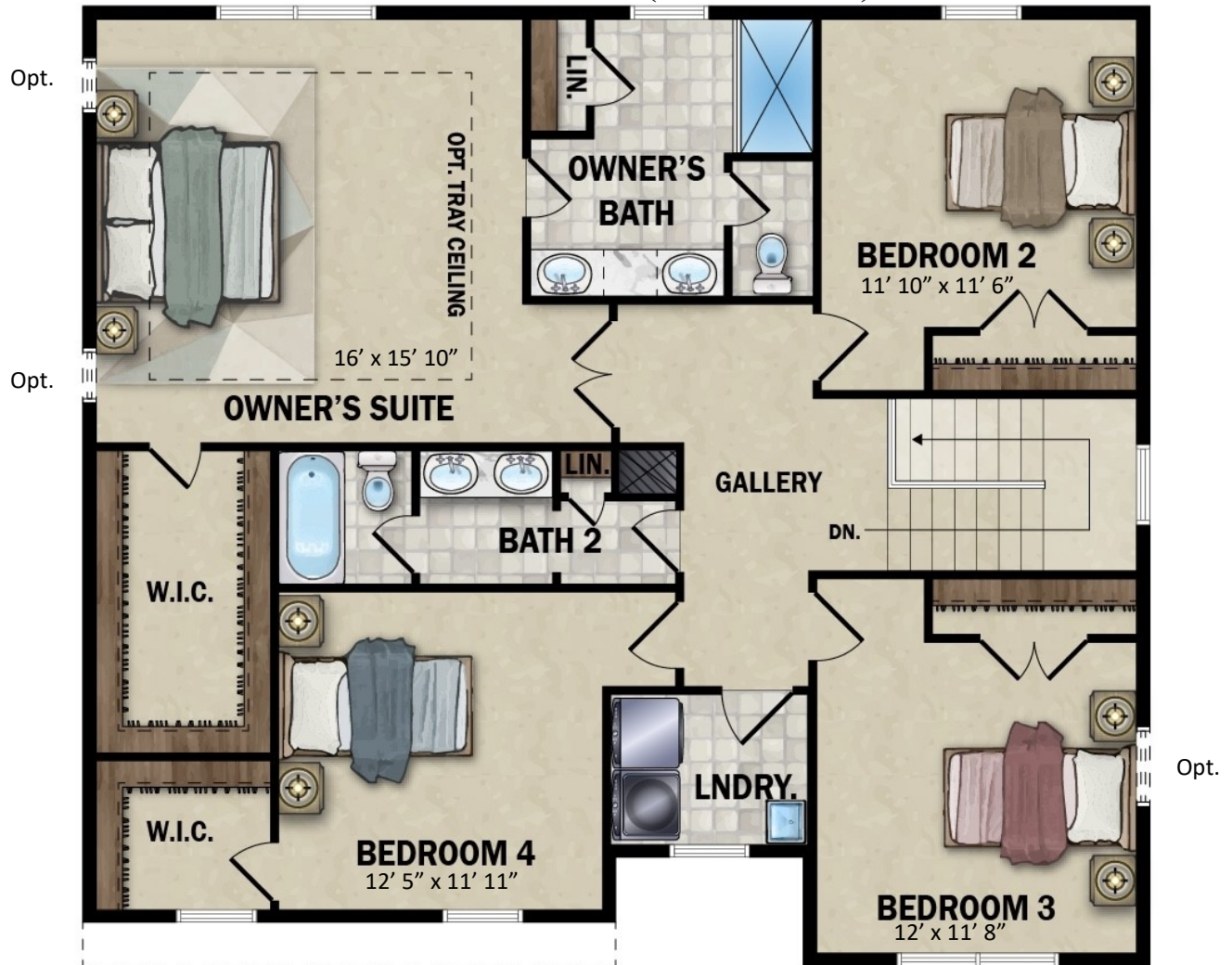
The washer, dryer and laundry tub are optional.

# STURBRIDGE

H O M E S

## The Glastonbury

### Second Floor Plan (Elevation 2)



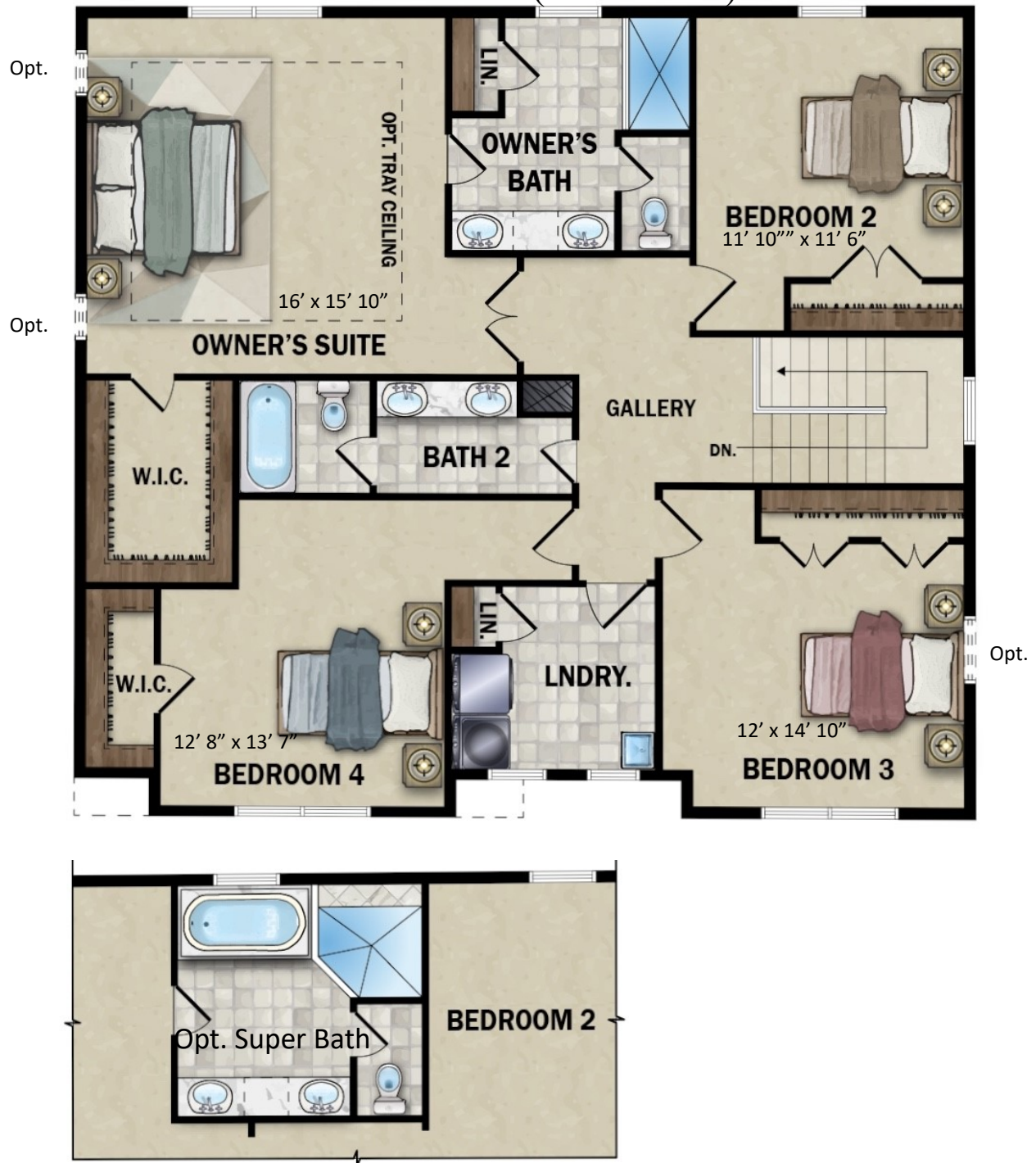
The washer, dryer and laundry tub are optional.





## The Glastonbury

### Second Floor Plan (Elevation 3)



The washer, dryer and laundry tub are optional.

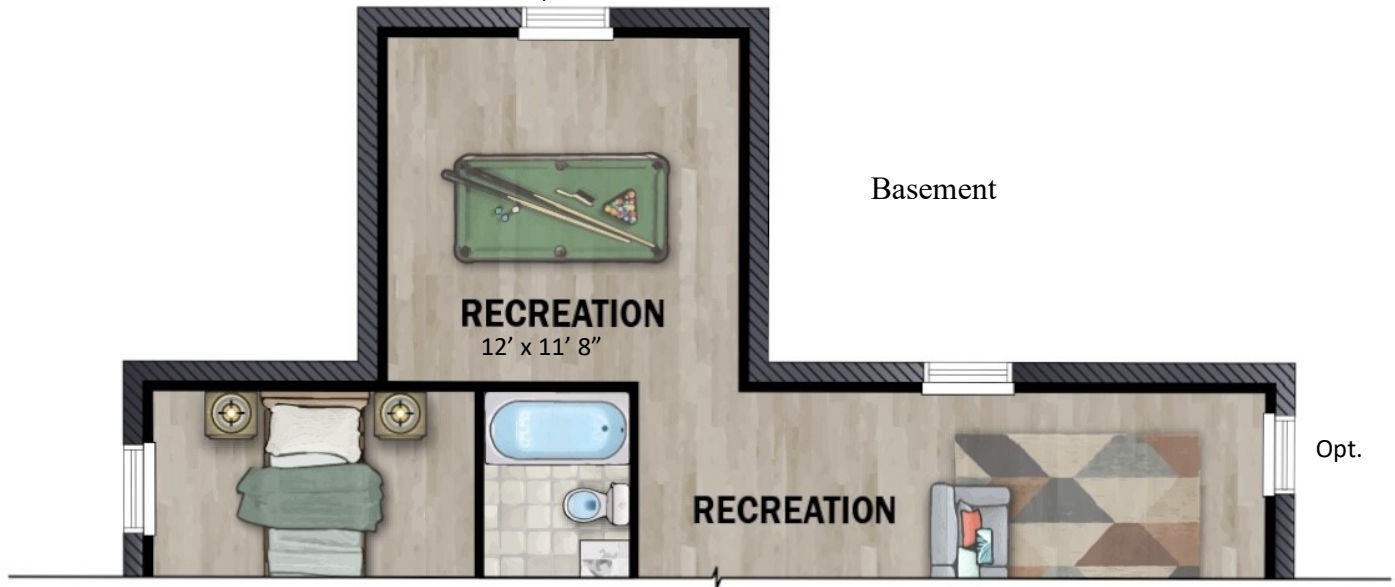




# The Glastonbury

## Optional Sun Room

Opt.



The finishing of the basement area under the sun room is not included in the Sun Room option. This needs to be purchased separately.



# The Glastonbury

Alternate Elevations

Elevation 2



Elevation 3

